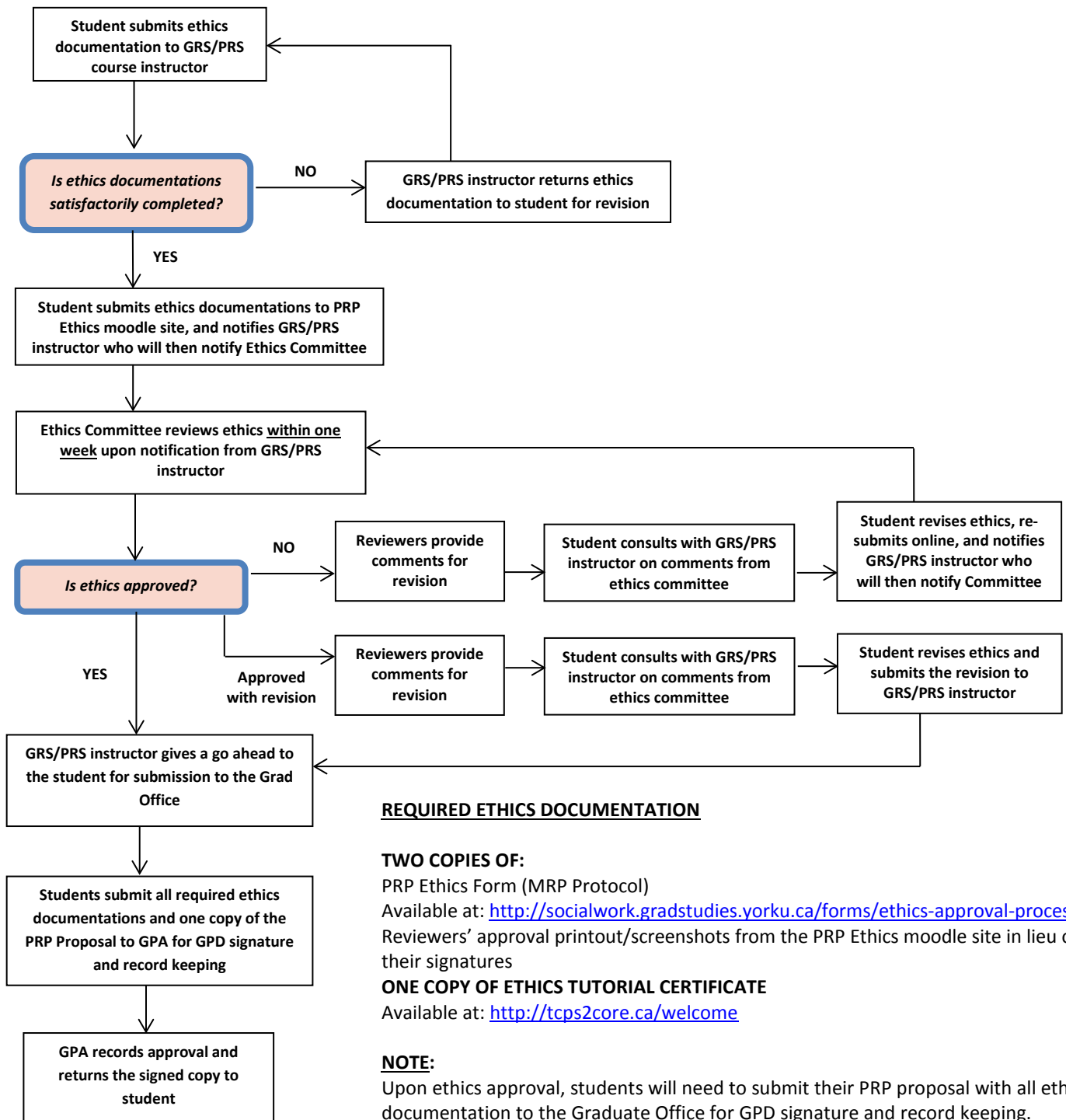


Ethics Approval Flow

Students whose research involves Indigenous/Aboriginal People are required to follow the Aboriginal Research Ethics Protocol (<https://yulink-new.yorku.ca/group/yulink/research-documents-forms#ORE>) [please sign in your York Passport account for the Aboriginal Research Ethics guidelines]



REQUIRED ETHICS DOCUMENTATION

TWO COPIES OF:

PRP Ethics Form (MRP Protocol)

Available at: <http://socialwork.gradstudies.yorku.ca/forms/ethics-approval-process/>

Reviewers' approval printout/screenshots from the PRP Ethics moodle site in lieu of their signatures

ONE COPY OF ETHICS TUTORIAL CERTIFICATE

Available at: <http://tcps2core.ca/welcome>

NOTE:

Upon ethics approval, students will need to submit their PRP proposal with all ethics documentation to the Graduate Office for GPD signature and record keeping.