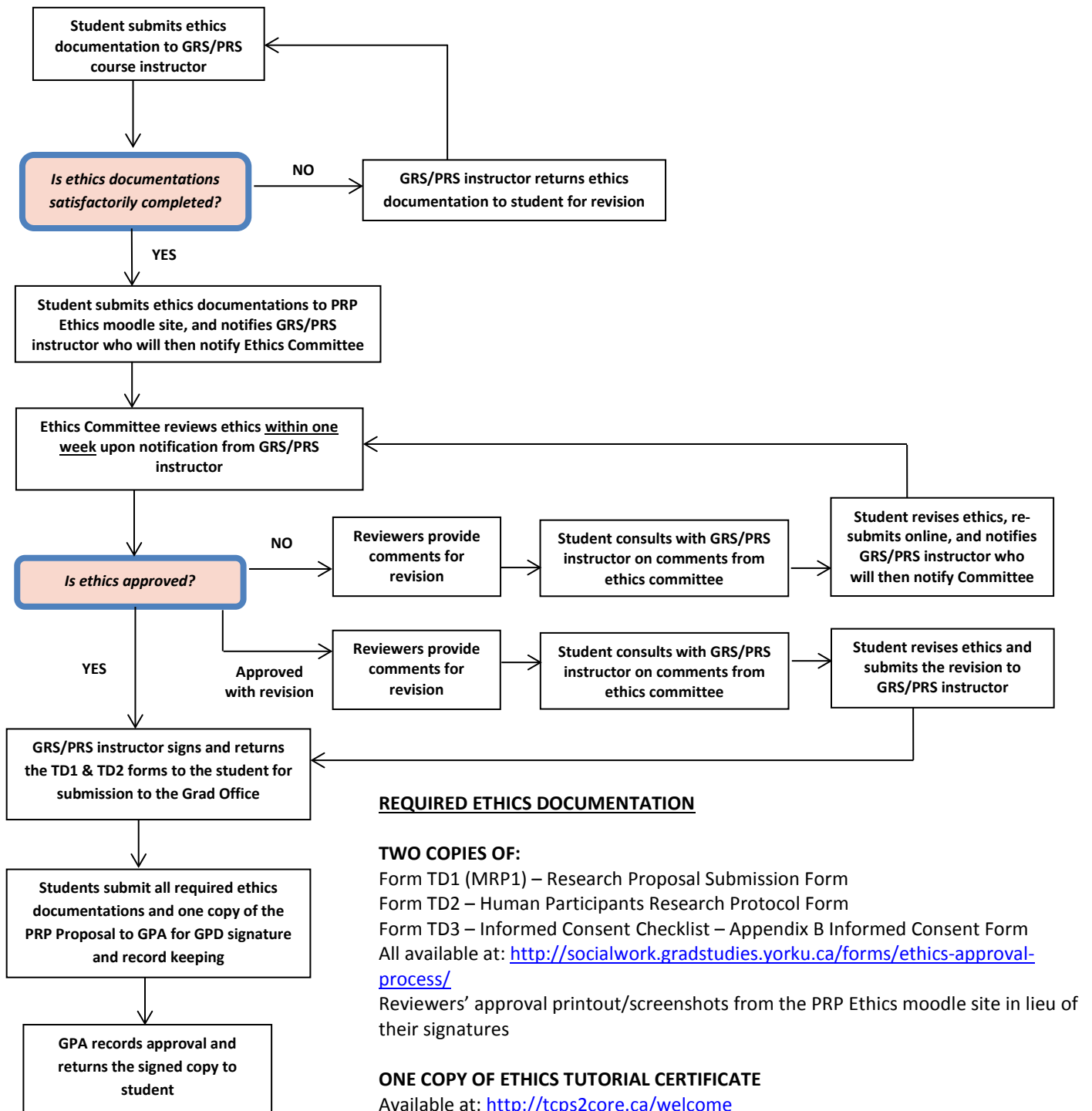


## Ethics Approval Flow

Students whose research involves Indigenous/Aboriginal People are required to follow the Aboriginal Research Ethics Protocol (<https://yulink-new.yorku.ca/group/yulink/research-documents-forms#ORE>) [please sign in your York Passport account for the Aboriginal Research Ethics guidelines]



### REQUIRED ETHICS DOCUMENTATION

#### **TWO COPIES OF:**

Form TD1 (MRP1) – Research Proposal Submission Form  
 Form TD2 – Human Participants Research Protocol Form  
 Form TD3 – Informed Consent Checklist – Appendix B Informed Consent Form  
 All available at: <http://socialwork.gradstudies.yorku.ca/forms/ethics-approval-process/>  
 Reviewers’ approval printout/screenshots from the PRP Ethics moodle site in lieu of their signatures

#### **ONE COPY OF ETHICS TUTORIAL CERTIFICATE**

Available at: <http://tcps2core.ca/welcome>

#### **NOTE:**

Upon ethics approval, students will need to submit their PRP proposal with all ethics documentation to the Graduate Office for GPD signature and record keeping.